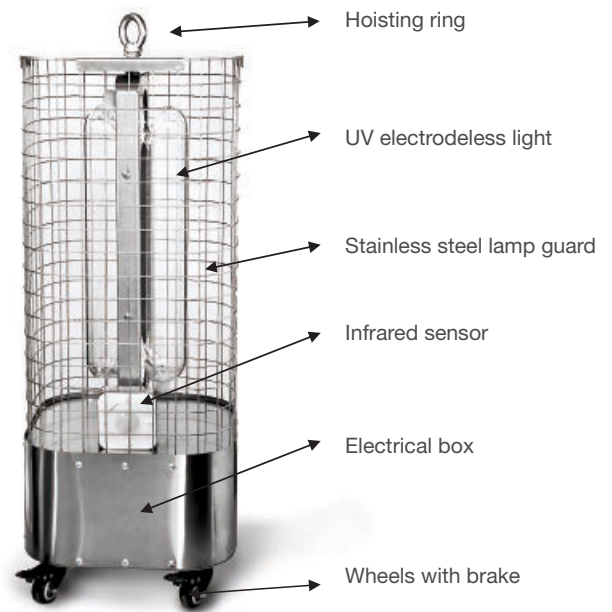




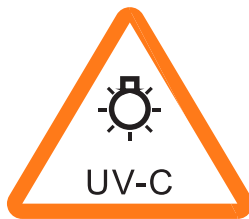
**UV INDUCTION STERILISER UNIT**  
**100W - 400W**  
**INSTRUCTION MANUAL**



# FEATURES



**NEVER** expose your eyes or skin to direct ultraviolet light!



- Destroys & prevents regeneration of viruses and bacteria
- High power, high intensity
- UV-C Deep wavelength ultra-violet technology
- Dual-purpose steriliser
- Fixed or Mobile
- Fast & convenient disinfection

## Germicidal Efficacy (185-253.7nm)

Micro-organism (Bacteria/ viruses)	UV sterilisation reference (99.999%)		
	Required flux ( $\mu\text{W sec/cm}^2$ )	Time required (s)	
		5mw	100mw
Anthrax spores	46,200	35	1.75
Escherichia coli	6,600	5	0.25
Clostridium tetanus	22,000	16.7	0.83
Diphtheria club	6,510	4.93	0.25
Typhoid fever	4,100	3.1	0.16
Mycobacterium tuberculosis	10,000	7.6	0.38
Gonococcus	8,500	6.4	0.32
Salmonella	7,600	5.8	0.29
Paratyphoid of Salmonella typhimurium	6,100	4.6	0.23
Dysentery	4,200	3.2	0.16
Vibrio comma cholera	6,500	4.9	0.25
Infectious hepatitis	8,000	6.2	0.31
Influenza	6,600	5	0.25
Poliomyelitis	6,600	5	0.25
COVID-19	6,600	6	0.3

# HOW TO OPERATE

1. Remove all protective packaging.
2. Undo the stainless steel hoisting ring and remove the stainless steel guard.
3. Connect to mains power.
4. Set the timer for the desired sterilisation time (See page 2). The default time is 30 minutes.
5. Replace the stainless steel guard and replace and tighten the stainless steel hoisting ring.
6. Place the steriliser in the centre of the required sterilisation space and lock the caster wheels in place.
7. Ensure that the infrared sensor faces the entrance of the sterilisation space.
8. When the indicator light is on the steriliser is operational.
9. CAUTION! Leave the sterilisation area within 30 seconds to avoid UV exposure.
10. The unit will turn off automatically after the preset sterilisation time is completed.
11. The area must be ventilated for 30 minutes (or as suggested in the following section) after disinfection.
12. If someone enters the room during disinfection, the unit will turn off automatically. To continue sterilisation, turn off the power switch and turn on again after 30 seconds. Leave the area immediately.
13. For the most effective sterilisation ensure that the regular lighting in the area to be disinfected is switched off whilst the disinfection is underway.
14. After the sterilisation unit has switched off it is important to ventilate the area before allowing normal occupancy of the particular work area.

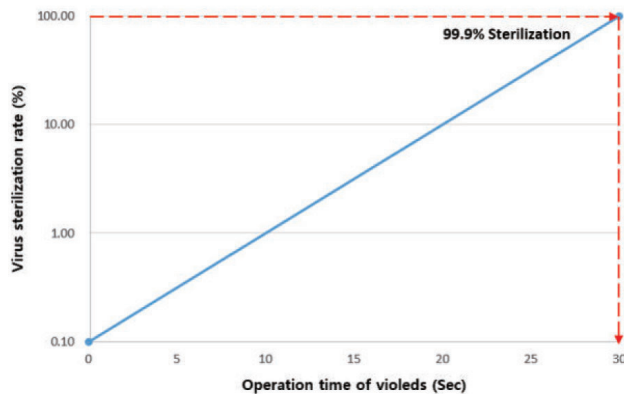
The INLED™ UV steriliser unit with the optional ozone wavelength lamp provides additional sterilisation through the sterilising action of ozone (O<sub>3</sub>).

- General health standards suggest that people should not be in indoor areas with an ozone content of 0.04 ppm (parts per million).
- It is important to properly ventilate the area post sterilisation to reduce the ozone content. See the DISINFECTION TIME AND RELATIVE AREA table below for guidelines.
- The ozone content in the air is influenced by ambient temperature, humidity and atmospheric pressure. See the OZONE CONTENT TEST below which was compiled in a relative space and environment, and the data is for reference only.
- An ozone content of 1ppm in the air equals 2.144mg/m<sup>3</sup>.
- During sterilisation with the ozone version of the UV sterilisation unit, the ozone level will increase as long as the unit is operational. For greater sterilisation of a given area, the unit may be used for longer than 30 minutes, as long as proper ventilation is done afterwards.

## SPECIFICATIONS

MODEL	DIMENSIONS (LxWxH)	VOLTAGE	INPUT	FREQUENCY	WATTAGE	WAVELENGTH (nm)	PEAK WAVELENGTH	UV SPECTRAL IRRADIANCE	UV SPECTRAL FLUX	N.W.
IND-200W-UVC	300x300x815mm	120-227V	2.2A	50/60HZ	210W	253.7nm-400nm	253.7nm	947.3μw/cm <sup>2</sup>	48W	8.7kg
IND-200W-UVC-O	300x300x815mm	120-227V	2.2A	50/60HZ	210W	185nm-400nm	253.7nm	947.3μw/cm <sup>2</sup>	48W	8.7kg
IND-250W-UVC	300x300x815mm	120-227V	2.6A	50/60HZ	260W	253.7nm-400nm	253.7nm	1200μw/cm <sup>2</sup>	62W	8.7kg
IND-250W-UVC-O	300x300x815mm	120-227V	2.6A	50/60HZ	260W	185nm-400nm	253.7nm	1200μw/cm <sup>2</sup>	62W	8.7kg
IND-300W-UVC	300x300x884mm	120-227V	3.2A	50/60HZ	310W	253.7nm-400nm	253.7nm	1300μw/cm <sup>2</sup>	94W	9.6kg
IND-300W-UVC-O	300x300x884mm	120-227V	3.2A	50/60HZ	310W	185nm-400nm	253.7nm	1300μw/cm <sup>2</sup>	94W	9.6kg
IND-400W-UVC	300x300x1080mm	120-227V	4.2A	50/60HZ	420W	253.7nm-400nm	253.7nm	1515μw/cm <sup>2</sup>	116W	11.3kg
IND-400W-UVC-O	300x300x1080mm	120-227V	4.2A	50/60HZ	420W	185nm-400nm	253.7nm	1515μw/cm <sup>2</sup>	116W	11.3kg

## DISINFECTION TIME AND RELATIVE AREA



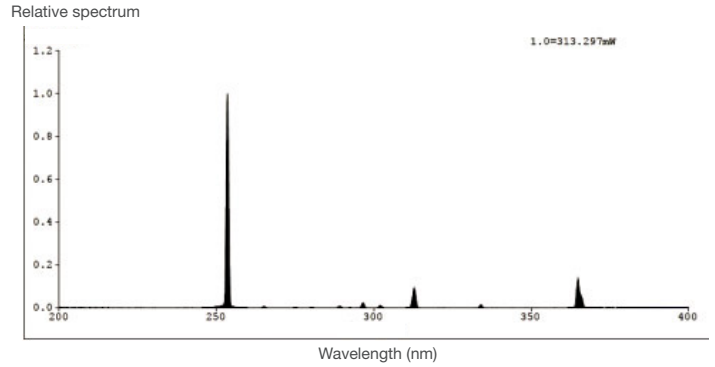
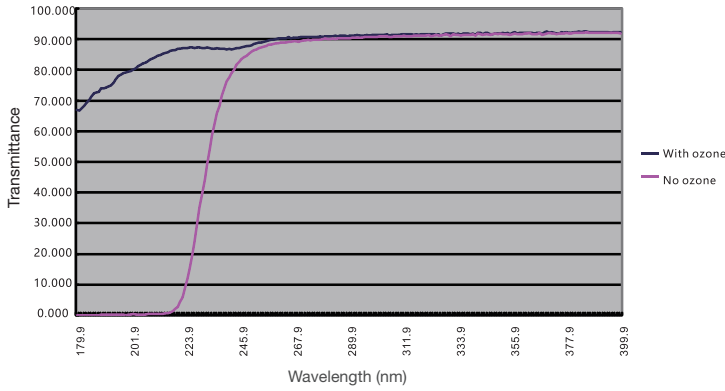
DISINFECTION POWER	ROOM AREA	RECOMMENDED DISINFECTION TIME	RECOMMENDED VENTILATION TIME	
			OZONE	OZONE FREE
200W	<100m <sup>2</sup>	30 min	30 min	20 min
250W	<150m <sup>2</sup>	30 min	30 min	20 min
300W	<200m <sup>2</sup>	30 min	30 min	20 min
400W	<250m <sup>2</sup>	30 min	30 min	20 min

Ambient temperature 0-50°C

## OZONE CONTENT TEST

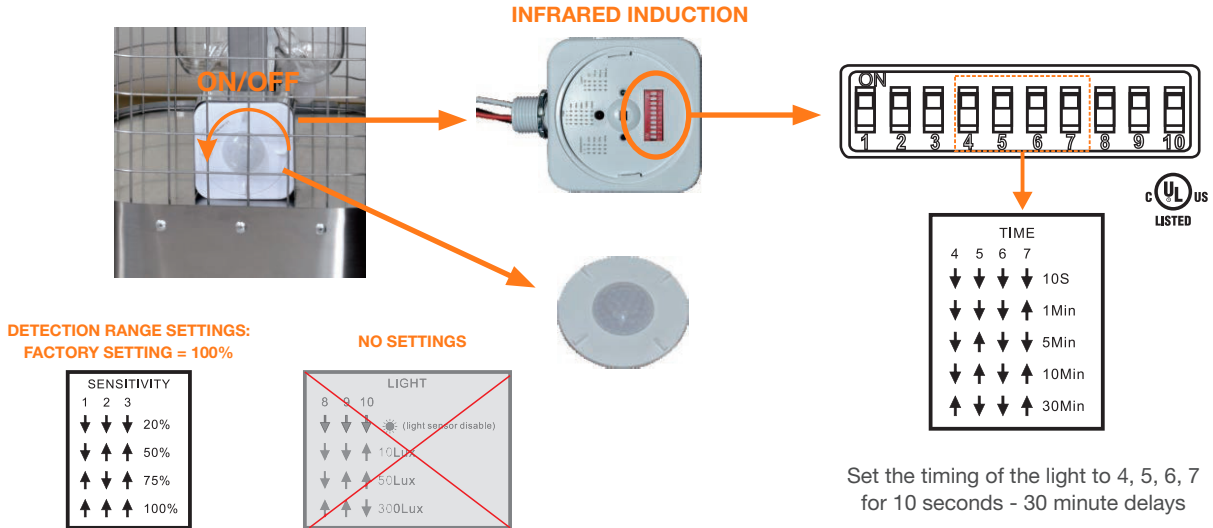
MODEL	WATTAGE	TESTING METER/ ROOM	OZONE CONTENT AFTER 30 MINUTES STERILISATION	OZONE CONTENT AFTER 30 MINUTES VENTILATION
UVL-200W-UVC	200W	EST-101 Ozone Meter Temperature-Humidity Meter Testing Room 135.2m <sup>2</sup> (7.45m x 6.6m x 2.75m) Enclosed room for 30 minutes Temperature 30°C, Humidity 87% Atmospheric Pressure 1004.7hpa	1ppm 2.144mg/m <sup>3</sup>	0.078ppm 0.167mg/m <sup>3</sup>
UVL-250W-UVC-O	250W		1.5ppm 3.216mg/m <sup>3</sup>	0.08ppm 0.17mg/m <sup>3</sup>
UVL-300W-UVC-O	300W		1.8ppm 3.86mg/m <sup>3</sup>	0.08ppm 0.17mg/m <sup>3</sup>
UVL-400W-UVC-O	400W		2.6ppm 5.58mg/m <sup>3</sup>	0.08ppm 0.17mg/m <sup>3</sup>

# SPECTRAL CURVES



## SENSOR SWITCH TIMER SETTING

Once the UV-C light is switched on there is 30 seconds before the unit becomes fully operational. If someone enters the room during sterilisation the unit will turn off automatically as the infrared sensor detects movement. In order to continue sterilisation, turn off the power switch and turn on again after 30 seconds. Sterilisation time setting options: 10 seconds, 1 minute, 5 minutes, 10 minutes, 30 minutes. Default time is 30 minutes.



## WARNING

- ALL PEOPLE MUST VACATE THE AREA IMMEDIATELY BEFORE THE UV-C LIGHT IS SWITCHED ON OR BECOMES OPERATIONAL. LIKEWISE ANIMALS AND BIRDS MUST BE REMOVED FROM THE AREA BEFORE STERILISATION BEGINS.
- PLANTS AND/OR ARTWORK MUST EITHER BE REMOVED OR BE PROPERLY PROTECTED SO AS TO AVOID DIRECT IRRADIATION.
- NEVER EXPOSE ANYBODY'S SKIN OR EYES TO DIRECT ULTRAVIOLET RADIATION.
- KEEP CHILDREN AWAY FROM THE UV-C LIGHT UNIT AT ALL TIMES.
- THE UV-C STERILISATION UNIT MUST ONLY BE OPERATED BY TRAINED PERSONNEL.
- DO NOT USE UV-C LIGHT AS A CONVENTIONAL LIGHT.
- THE UV-C LIGHT MUST NOT BE USED FOR LONGER THAN IS RECOMMENDED IN THE MANUAL.
- DO NOT IMMERSE THE UV-C LIGHT UNIT IN WATER AND/OR DO NOT WASH WITH WATER. TO AVOID DAMAGING THE UNIT, KEEP IT DRY AT ALL TIMES.



NICK MCCARTNEY  
083 700 0433  
www.lightsensor.co.za